

MARZONI

LOOKBOOK

FALL · WINTER 2024

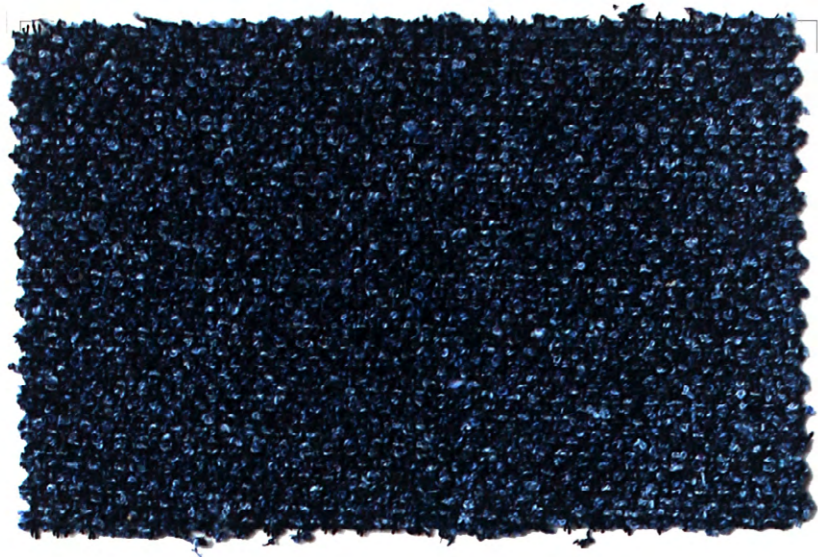
MADE FOR YOU
-- Su Misura --



PURE NEW WOOL
30000069

www.MARZONI.it





641 - 135 / 900

62% Cotton
20.5% Nylon
17% Mohair
0.5% Elastane
150cm
490g
Black / Blue



651 - 617 / 1200

90% Wool
10% Cashmere
150cm
290g
Brown / Blue



605 - 351 / 500

98% Cotton
2% Lyera
150cm
470g
Beige





641 - 144 / 900

90% Wool
10% Polyamide
150cm
335g
Green / Khaki



651 - 612 / 1200

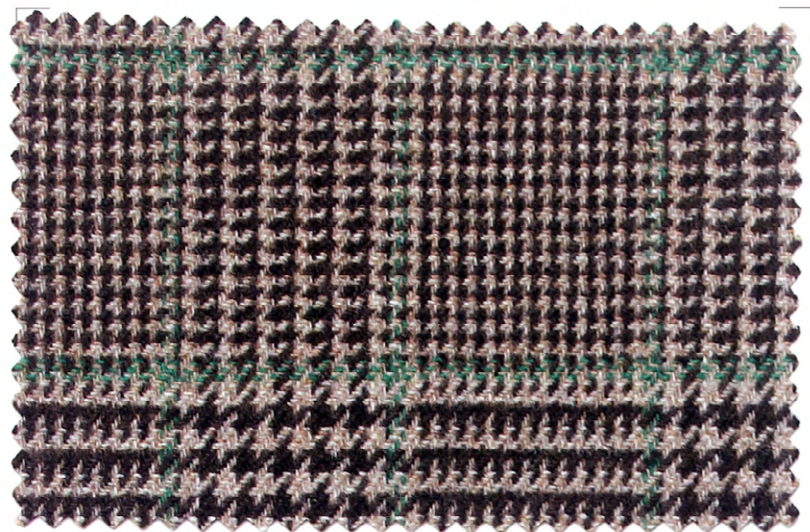
90% Wool
10% Cashmere
150cm
290g
Beige / Blue



620 - 839 / 900

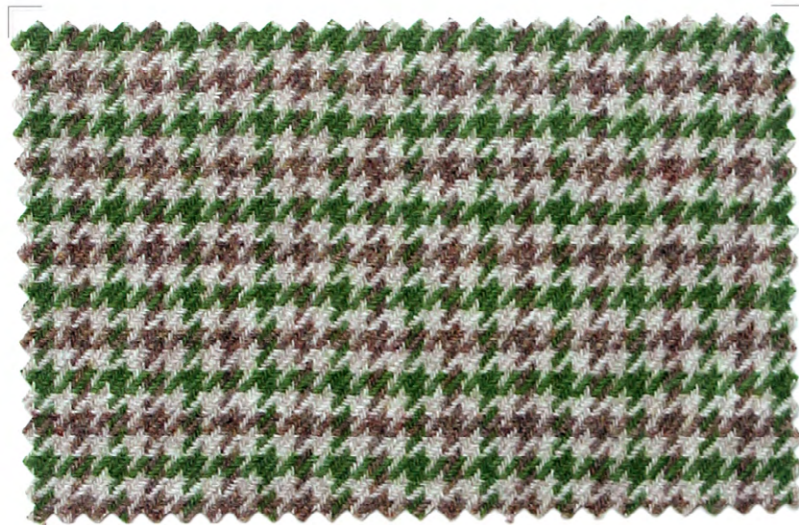
100% Wool
150cm
340g
Olive





651 - 672 / 1200

90% Wool
10% Cashmere
150cm
310g
Brown / Green



651 - 607 / 1200

90% Wool
10% Cashmere
150cm
290g
Pink / Green



605 - 464 / 500

100% Cotton
150cm
385g
Taupe





641 - 140 / 900

97.5% Wool
2% Polyamide
0.5% Elastane
150cm
330g
Dark Navy / Blue



651 - 603 / 1200

90% Wool
10% Cashmere
150cm
290g
Navy / Purple



605 - 364 / 500

98% Cotton
2% Lycra
150cm
470g
Deep Purple





651 - 684 / 1500

90% Wool
10% Cashmere
150cm
290g
Red / Black



651 - 605 / 1200

90% Wool
10% Cashmere
150cm
290g
Burgundy / Black



620 - 834 / 900

100% Wool
150cm
340g
Brown





641 - 137 / 900

45% Wool
41% Cotton
14% Polyamide
150cm
325g
Royal Blue / White



651 - 667 / 1200

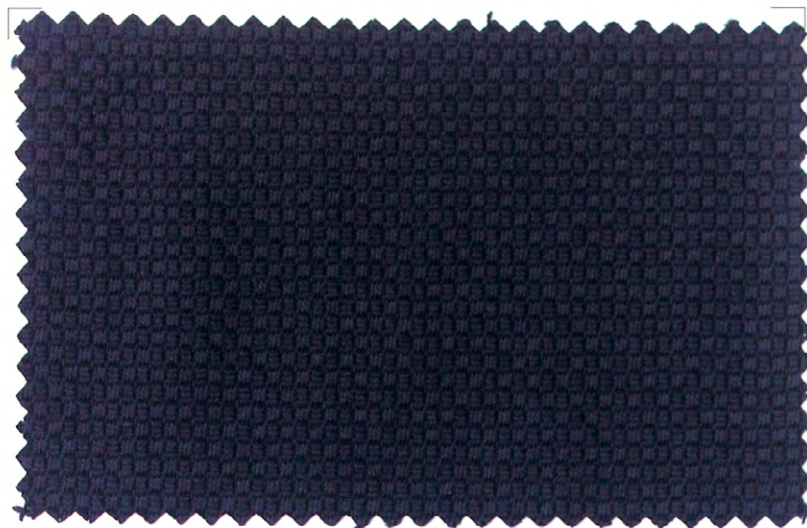
90% Wool
10% Cashmere
150cm
310g
Blue / Green



620 - 868 / 900

100% Wool
150cm
340g
Leaf Green





641 - 113 / 900

97% Wool
3% Cashmere
150cm
340g
Black



651 - 668 / 1200

90% Wool
10% Cashmere
150cm
310g
Brown / Purple



605 - 472 / 500

100% Cotton
150cm
410g
Purple





MARZONI



641 - 173 / 1000

100% Wool
150cm
340g
Pansy / White



651 - 601 / 1200

90% Wool
10% Cashmere
150cm
290g
Blue / Maroon



605 - 353 / 500

98% Cotton
2% Lycra
150cm
470g
Burgundy





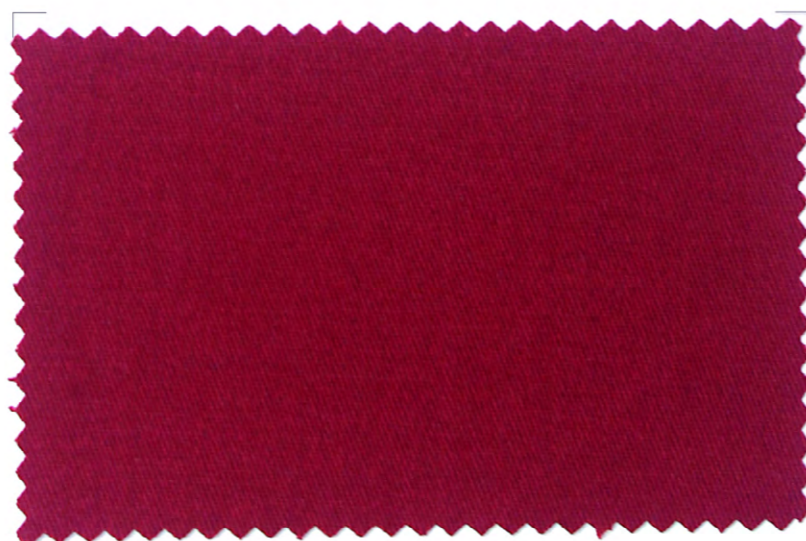
641 - 172 / 1000

100% Wool
150cm
340g
Gray / Pansy



651 - 670 / 1200

90% Wool
10% Cashmere
150cm
310g
Blue / Red



605 - 367 / 500

98% Cotton
2% Lycra
150cm
470g
Red





651 - 689 / 1500
 90% Wool
 10% Cashmere
 150cm
 290g
 Olive / Black

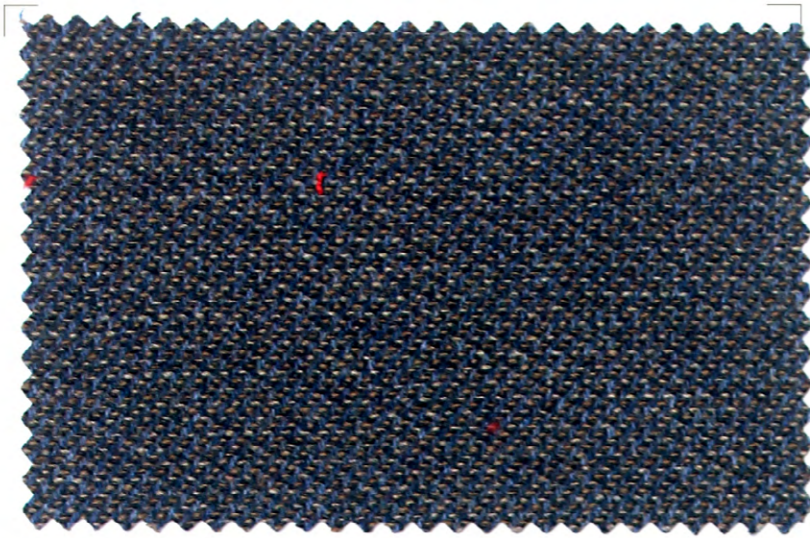


651 - 674 / 1200
 90% Wool
 10% Cashmere
 150cm
 310g
 Blue / Green



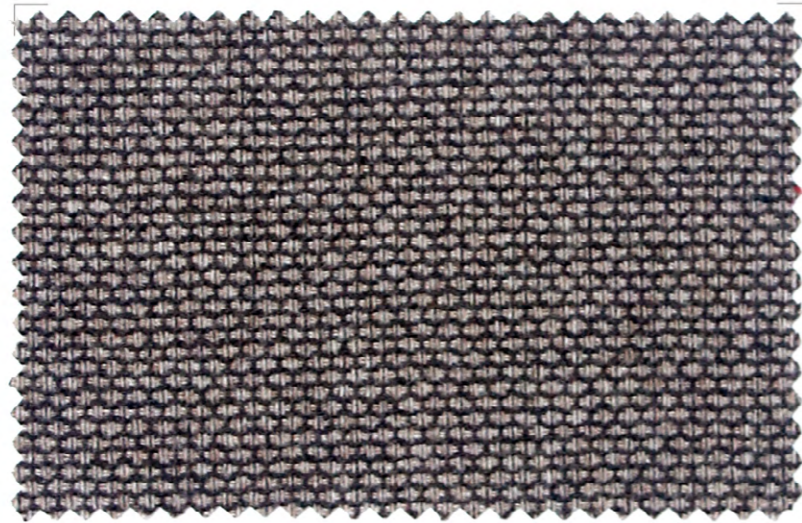
605 - 474 / 500
 100% Cotton
 150cm
 410g
 Red





651 - 692 / 1500

90% Wool
10% Cashmere
150cm
290g
Bluish Gray



651 - 678 / 1200

90% Wool
10% Cashmere
150cm
310g
Brown



620 - 828 / 900

100% Wool
150cm
340g
Beige





651 - 657 / 1200

90% Wool
10% Cashmere
150cm
310g
Dark Green



651 - 602 / 1200

90% Wool
10% Cashmere
150cm
290g
Beige / Gray



620 - 866 / 900

100% Wool
150cm
340g
Bottle Green





641 - 149 / 1000

45% Wool
41% Cotton
14% Polyamide
150cm
330g
Brown / Teal / Navy



601 - 611 / 900

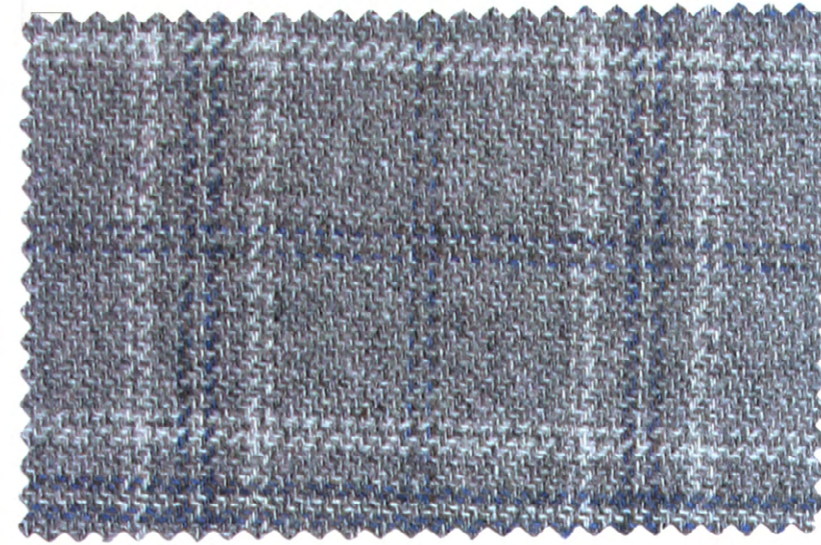
100% Wool
150cm
290g
Brown / Gray



620 - 823 / 900

100% Wool
150cm
340g
Gray





651 - 687 / 1500

90% Wool
10% Cashmere
150cm
290g
Gray / White



601 - 999 / 1200

90% Wool
10% Cashmere
150cm
280g
Blue / Gray



620 - 824 / 900

100% Wool
150cm
340g
Charcoal





651 - 686 / 1500

90% Wool
10% Cashmere
150cm
290g
Coral / Red



651 - 661 / 1200

90% Wool
10% Cashmere
150cm
310g
Brown



605 - 476 / 500

100% Cotton
150cm
410g
Brick





MARZONI



651 - 650 / 1200

100% Wool
150cm
320g
Maroon / White



651 - 659 / 1200

90% Wool
10% Cashmere
150cm
310g
Maroon / Blue



620 - 837 / 900

100% Wool
150cm
340g
Brick





651 - 685 / 1500

90% Wool
10% Cashmere
150cm
290g
Blue / Blue



651 - 664 / 1200

90% Wool
10% Cashmere
150cm
310g
Blue / Green



605 - 362 / 500

98% Cotton
2% Lycra
150cm
470g
Green





651 - 021 / 1200
90% Wool
10% Cashmere
150cm
300g
Brown / Purple

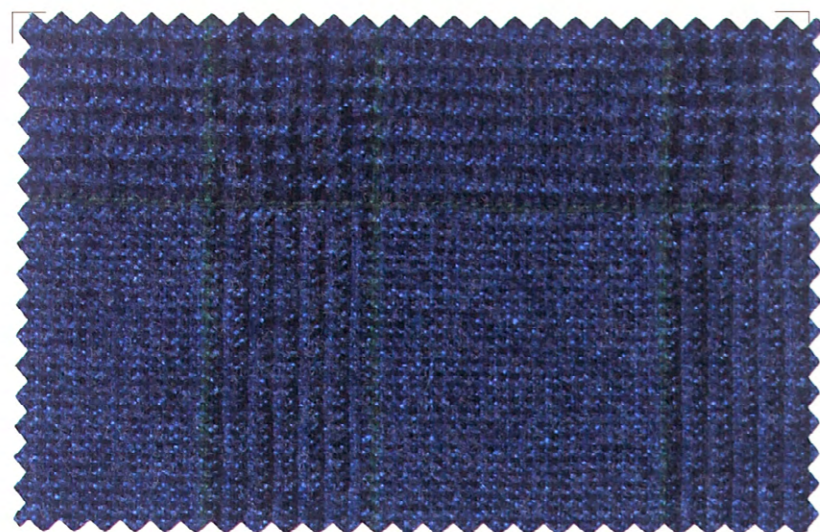


651 - 652 / 1200
100% Wool
150cm
270g
Light Gray / Brown / Purple



620 - 873 / 900
100% Wool
150cm
340g
Rust





641 - 175 / 1000

100% Wool
150cm
340g
Blue / Green



601 - 991 / 1200

90% Wool
10% Cashmere
150cm
340g
Navy / Black



723 - 062 / 1200

100% Wool
150cm
270g
Blue
Super 130's





651 - 037 / 1200

90% Wool
10% Cashmere
150cm
300g
Navy / Blue / Green



651 - 616 / 1200

90% Wool
10% Cashmere
150cm
290g
Navy / Blue



620 - 825 / 900

100% Wool
150cm
340g
Dark Charcoal





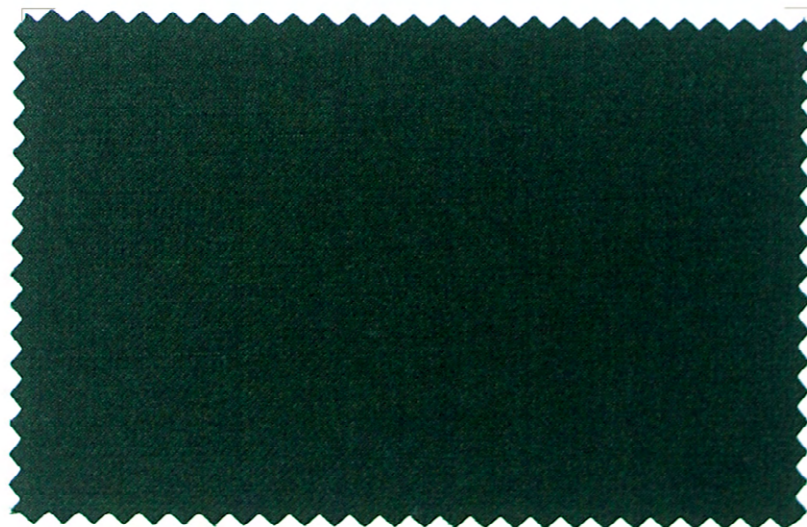
651 - 036 / 1200

90% Wool
10% Cashmere
150cm
300g
Navy



601 - 990 / 1200

90% Wool
10% Cashmere
150cm
340g
Olive / Black



602 - 263 / 800

100% Wool
150cm
260g
Dark Green





641 - 073 / 900
90% Wool
10% Polyamide
150cm
340g
Deep Red / Gray



601 - 988 / 1200
90% Wool
10% Cashmere
150cm
300g
Olive / Tan



620 - 833 / 900
100% Wool
150cm
340g
Burgundy





641 - 164 / 900

100% Wool
150cm
275g
Green / Purple



601 - 607 / 900

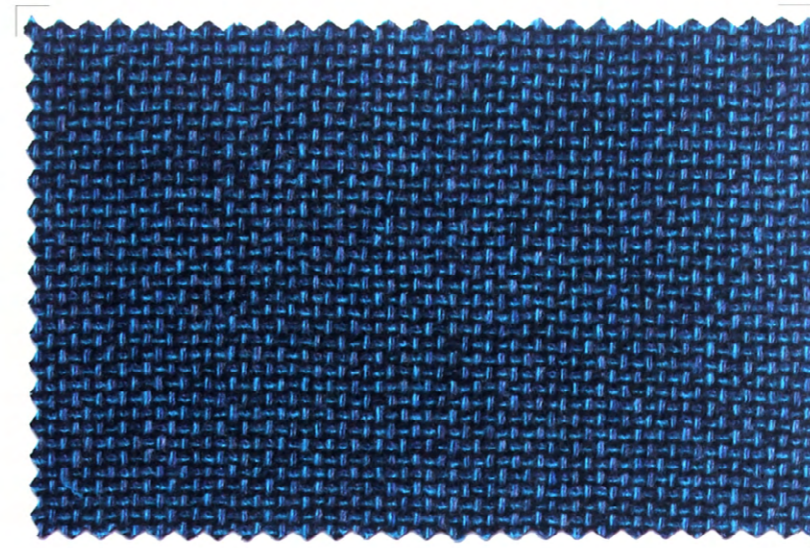
100% Wool
150cm
290g
Teal / Brown



605 - 480 / 500

100% Cotton
150cm
410g
Teal





651 - 691 / 1500

90% Wool
10% Cashmere
150cm
290g
Teal



601 - 986 / 1200

90% Wool
10% Cashmere
150cm
320g
Green / Brick



620 - 832 / 900

100% Wool
150cm
340g
Dark Brown





651 - 694 / 1500

90% Wool
10% Cashmere
150cm
290g
Beige / Beige



601 - 982 / 1200

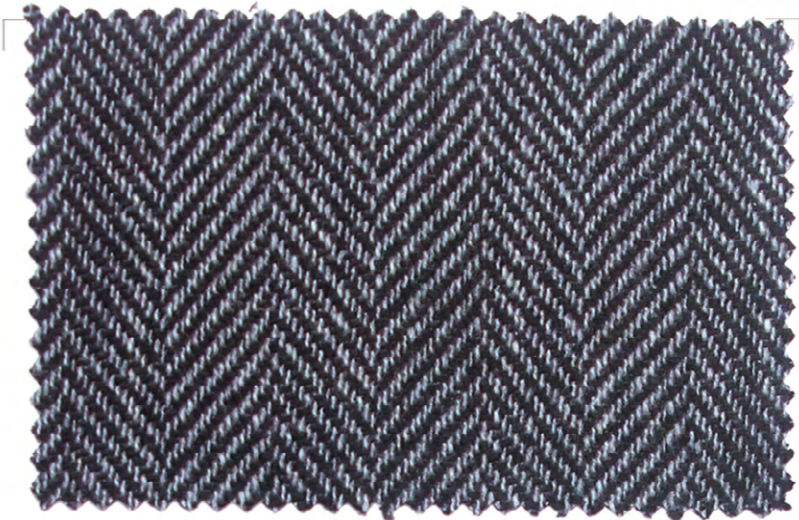
90% Wool
10% Cashmere
150cm
300g
Beige / Brown



620 - 843 / 900

100% Wool
150cm
340g
Blue





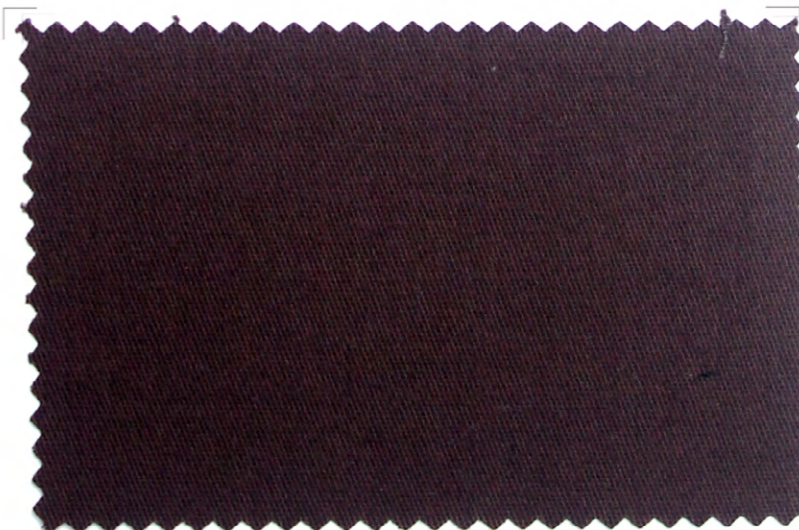
651 - 040 / 1500

95% Wool
5% Cashmere
150cm
290g
Gray



601 - 985 / 1200

90% Wool
10% Cashmere
150cm
300g
Navy / Deep Red



605 - 357 / 500

98% Cotton
2% Lycra
150cm
470g
Brown





651 - 649 / 1200

100% Wool
150cm
320g
Maroon / Green



601 - 599 / 900

100% Wool
150cm
350g
Brown / Charcoal



620 - 831 / 900

100% Wool
150cm
340g
Brown





MARZONI



651 - 647 / 1200
100% Wool
150cm
320g
Taupe / Green



601 - 582 / 900
100% Wool
150cm
350g
Olive / Dark Navy



605 - 421 / 700
98% Cotton
2% Lycra
150cm
420g
Green





651 - 645 / 1200

100% Wool
150cm
320g
Maroon / Green



601 - 605 / 900

100% Wool
150cm
290g
Blue / Brick



620 - 845 / 900

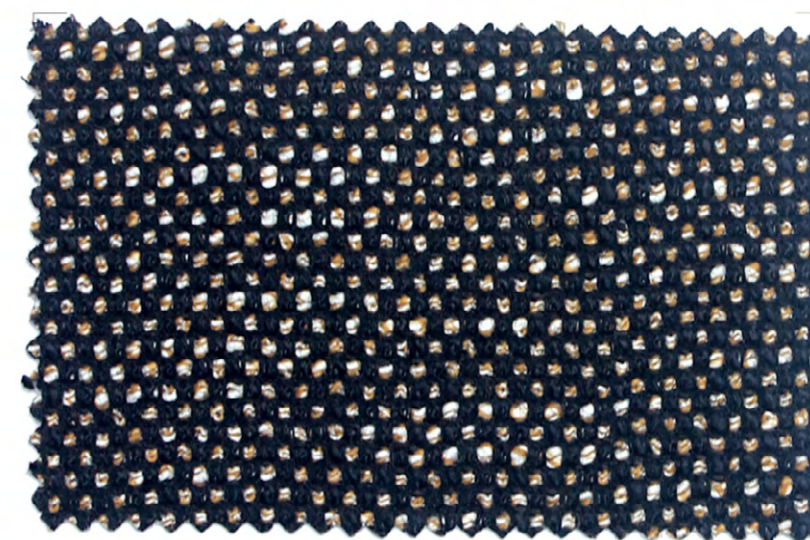
100% Wool
150cm
340g
Dark Blue





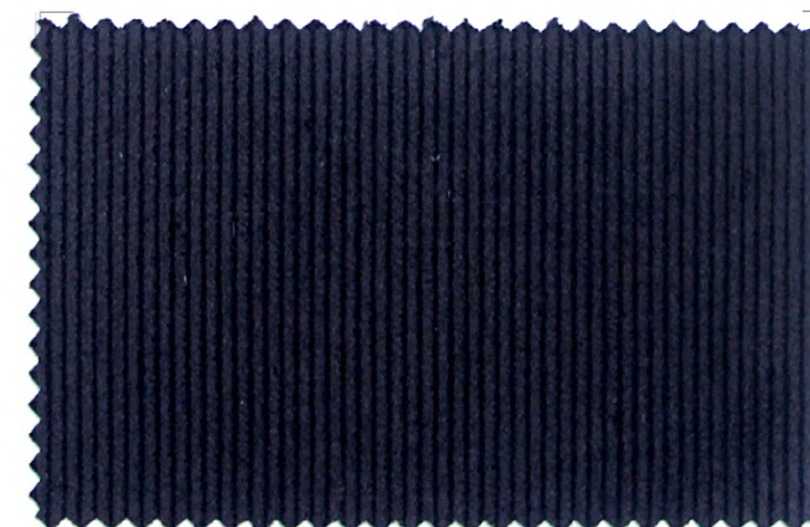
651 - 041 / 1500

95% Wool
5% Cashmere
150cm
290g
Green



601 - 113 / 1000

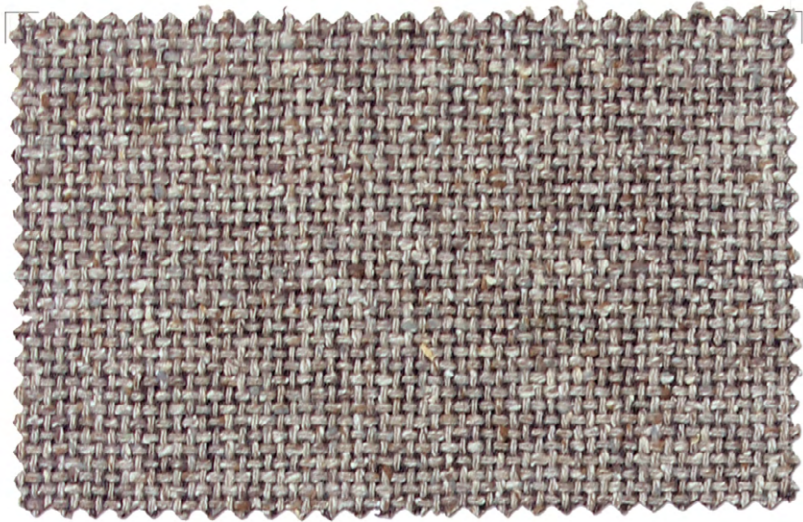
36% Wool
34% Cotton
18% Acrylic
11% Nylon
1% Lycra
150cm
380g
Yellow / Brown
Water Repellent



605 - 411 / 500

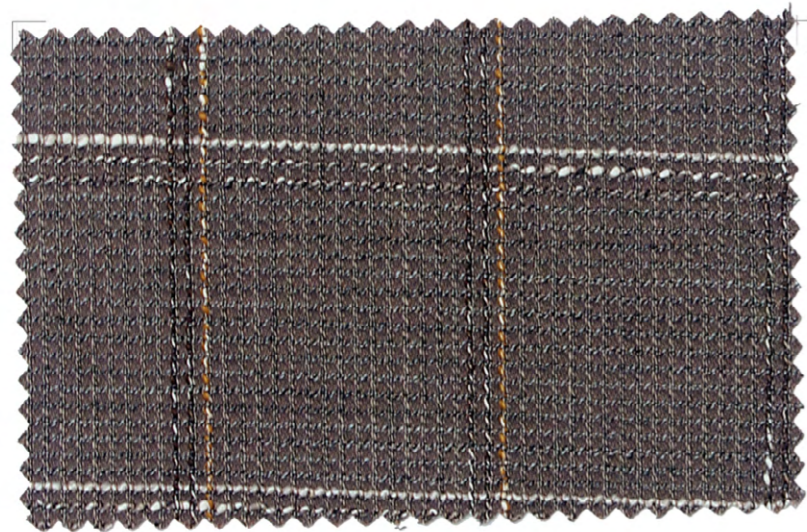
100% Cotton
150cm
410g
Charcoal





641 - 151 / 1300

65% Wool
35% Silk
150cm
400g
Beige



614 - 016 / 900

58% Cotton
41% Wool
1% Elastane
150cm
260g
Khaki / Beige



605 - 497 / 500

98% Cotton
2% Lycra
150cm
420g
Beige





641 - 158 / 1000

92% Wool
8% Polyamide
150cm
335g
Blue



614 - 014 / 900

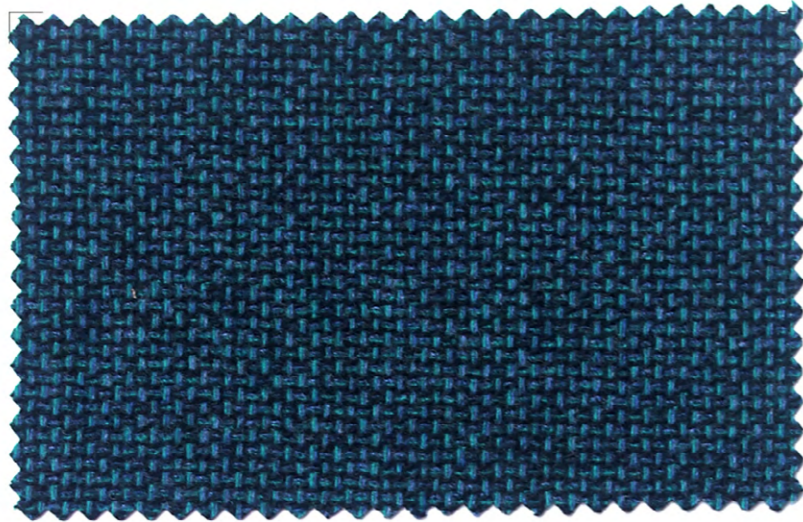
94% Cotton
3% Acrylic
2% Polyamide
1% Elastane
150cm
295g
Navy / White / Brown



605 - 352 / 500

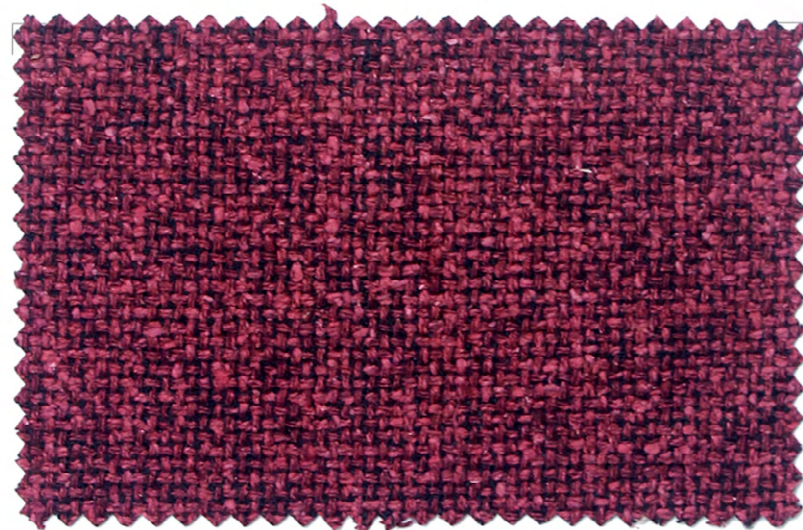
98% Cotton
2% Lycra
150cm
470g
Brown





651 - 690 / 1500

90% Wool
10% Cashmere
150cm
290g
Green



641 - 157 / 1300

65% Wool
35% Silk
150cm
400g
Maroon



620 - 877 / 900

100% Wool
150cm
340g
Royal Blue



MARZONI



665 - 134 / 1500

90% Wool
10% Cashmere
150cm
560g
Red



665 - 152 / 1600

90% Wool
10% Cashmere
150cm
540g
White



665 - 135 / 1500

90% Wool
10% Cashmere
150cm
560g
Blue





665 - 151 / 1600

90% Wool
10% Cashmere
150cm
540g
Burgundy



665 - 154 / 1600

90% Wool
10% Cashmere
150cm
540g
Pink



665 - 145 / 1600

90% Wool
10% Cashmere
150cm
540g
Purple



MARZONI



665 - 118 / 1600

90% Wool
10% Cashmere
150cm
540g
Beige



665 - 119 / 1600

90% Wool
10% Cashmere
150cm
540g
Beige



665 - 143 / 1600

90% Wool
10% Cashmere
150cm
540g
Camel





665 - 125 / 1600

90% Wool
10% Cashmere
150cm
540g
Brown



665 - 142 / 1600

90% Wool
10% Cashmere
150cm
540g
Camel



665 - 144 / 1600

90% Wool
10% Cashmere
150cm
540g
Dark Brown





MARZONI



665 - 149 / 1600
90% Wool
10% Cashmere
150cm
540g
Black

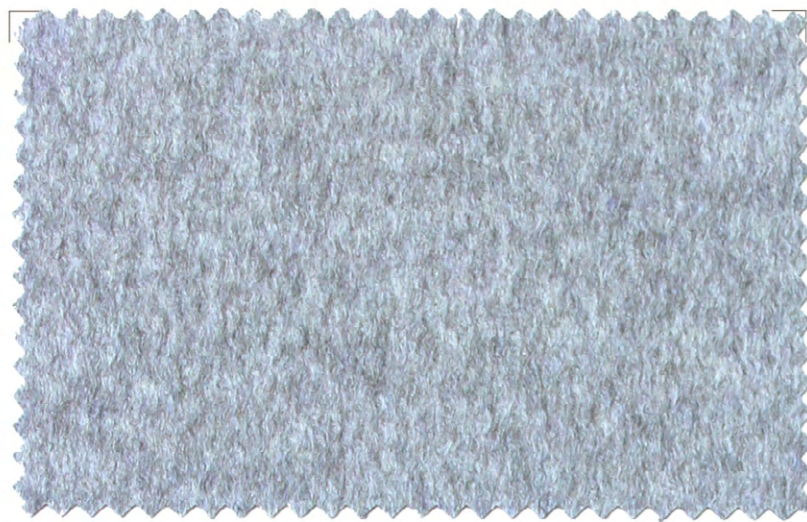


665 - 153 / 1600
90% Wool
10% Cashmere
150cm
540g
Green



665 - 150 / 1600
90% Wool
10% Cashmere
150cm
540g
Blue





665 - 126 / 1600

90% Wool
10% Cashmere
150cm
540g
Light Gray



665 - 113 / 1600

90% Wool
10% Cashmere
150cm
540g
Gray



665 - 114 / 1600

90% Wool
10% Cashmere
150cm
540g
Charcoal



MARZONI



MARZONI



665 - 132 / 1500

90% Wool
10% Cashmere
150cm
560g
Coffee



665 - 146 / 1600

90% Wool
10% Cashmere
150cm
540g
Navy



665 - 148 / 1600

90% Wool
10% Cashmere
150cm
540g
Dark Navy





665 - 141 / 1600

90% Wool
10% Cashmere
150cm
540g
Beige



665 - 116 / 1600

90% Wool
10% Cashmere
150cm
540g
Navy



665 - 117 / 1600

90% Wool
10% Cashmere
150cm
540g
Navy



A man with dark hair and light eyes stands in a dark, textured environment. He is wearing a dark plaid suit jacket over a light-colored striped shirt and a dark tie with small white dots. A pocket square is visible in his jacket. To his left, a large, vibrant red fabric is draped over a form, creating deep folds and highlights. The background is a dark, mottled grey with some faint, lighter patterns.

MARZONI

MARZONI
all rights reserved